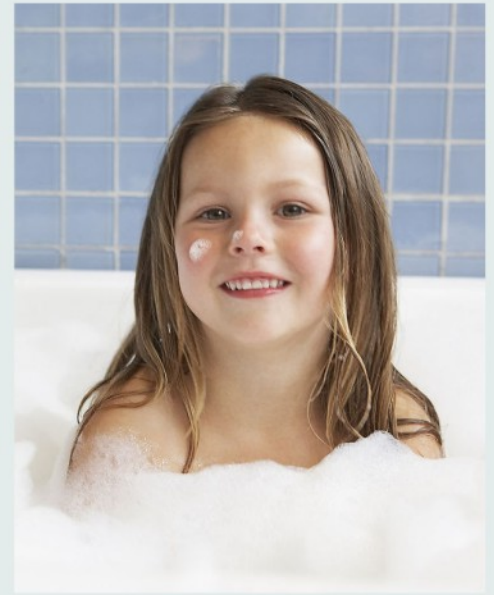


Enjoy My Life



Model:

- XFJ80FDCH XFJ100FDCH
- XFJ120FDCH XFJ150FDCH
- XFJ180FDCH XFJ210FDCH

Tankless Electric Water Heater

Description

- *Unique glossy IMD front cover, splash proof, corrosion resistant, age resistant.
- *Adopts patent heating technology- enclosed loop heating system, instant for hot water with less heating loss, no insulation material which totally separates water from electricity
- * Multi-layer structure heating chamber form a long circulating water channel, no limescale, long lifespan.
- *Electricity leakage protection, anti-scalding protection, over-pressure and over temperature protection. Water and electricity isolation protection
- *Direct temperature setting, automatic thermostat, the hot water temperature will be constant. Automatic memory function avoid repeated operation
- *LED widescreen touch display screen to show the working condition、 outlet temperature、 working time、 power consumption and water consumption.
- *Conversion display mode, the temp. display can be changed between Celsius degree and Fahrenheit degree.
- *Fault auto-detection technique, the cause will be displayed automatically while failure.



Featuring advanced microprocessor control



IMD film front cover



Model:

XFJ150H

XFJ180H

XFJ210H



Description

- *Metal cover with print, water splash proof, corrosion resistant, age resistant, resistance to high pressure.
- *Adopts patent heating technology- enclosed loop heating system, instant for hot water with less heating loss, no insulation material which totally separates water from electricity
- * Multi-layer structure heating chamber form a long circulating water channel, no limescale, long lifespan.
- *Electricity leakage protection, anti-scalding protection, over-pressure and over temperature protection. Water and electricity isolation protection
- *Direct temperature setting, automatically thermostat, the hot water temperature will be constant. Automatic memory function avoid repeated operation
- *LED display screen to show the working condition、 outlet temperature
- *Conversion display mode, the temp. display can be changed between Celsius degree and Fahrenheit degree.
- *Fault auto-detection technique, the cause will be displayed automatically while failure



face washing



teeth washing



hand washing



For U.S. and Canada



Over-pressure protection



Over temperature Protection



Creepage protection



Anti-scalding protection



Insulation wall Protection



Water and electricity Isolation protection

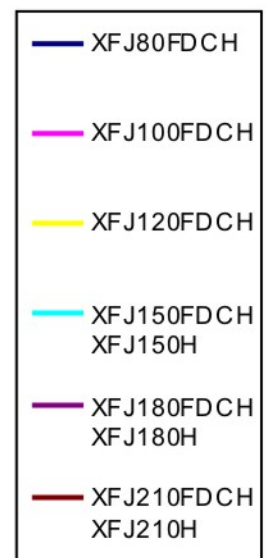
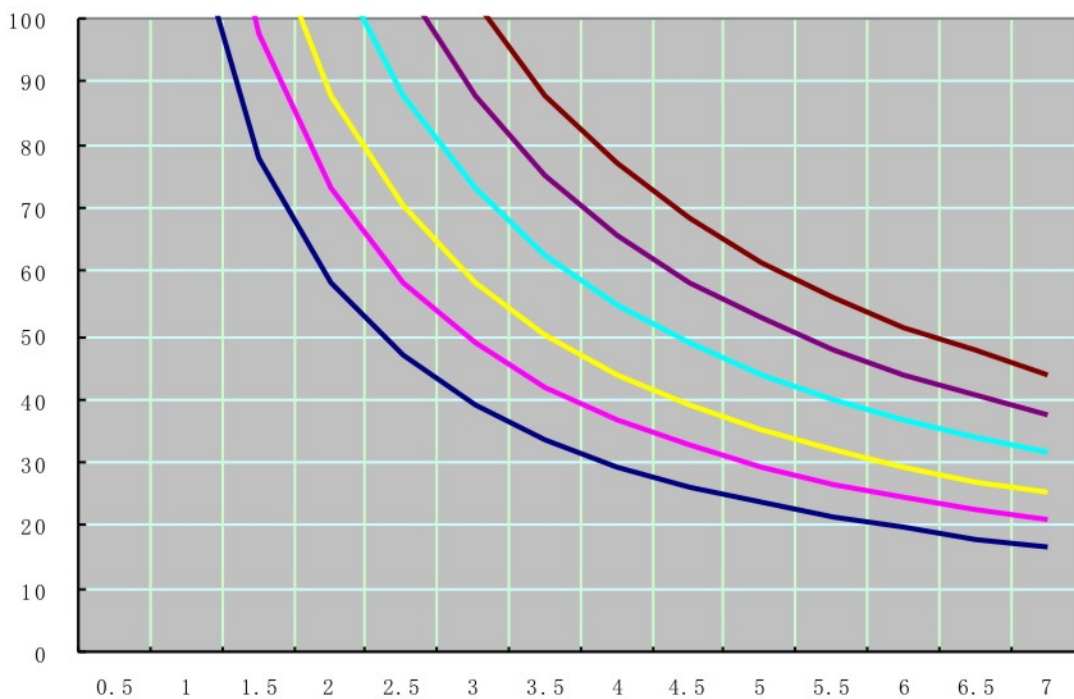


Technology Data

Model	XFJ80FDCH	XFJ100FDCH	XFJ120FDCH	XFJ150FDCH XFJ150H	XFJ180FDCH XFJ180H	XFJ210FDCH XFJ210H
Phase	1	1	1	1	1	1
Voltage/Freq V	240v/60Hz	240v/60Hz	240v/60Hz	240v/60Hz	240v/60Hz	240v/60Hz
Wattage kW	8kw	10kw	12kw	15kw	18kw	21kw
Max.amp.load A	34	42	50	63	75	88
Min. required circuit breaker size A	40	60	60	2X40	2x50	2x60
Min. wire size AWG cooper	9	9	8	2x9	2x9	2x8
Min. water flow to activate unit GPM	0.48	0.48	0.48	0.74	0.74	0.74
Working pressure PSI/bar	Max.150/10					
Surface power density (Heating Chamber) w/cm ²	14.7	16.4	17.1	10.7	12.8	15
Product Dimensions mm	385x260x86	385x260x86	385x260x86	385x260x86 408x282x93	385x260x86 408x282x93	385x260x86 408x282x93
Water connections NPT	Copper 3/4"					

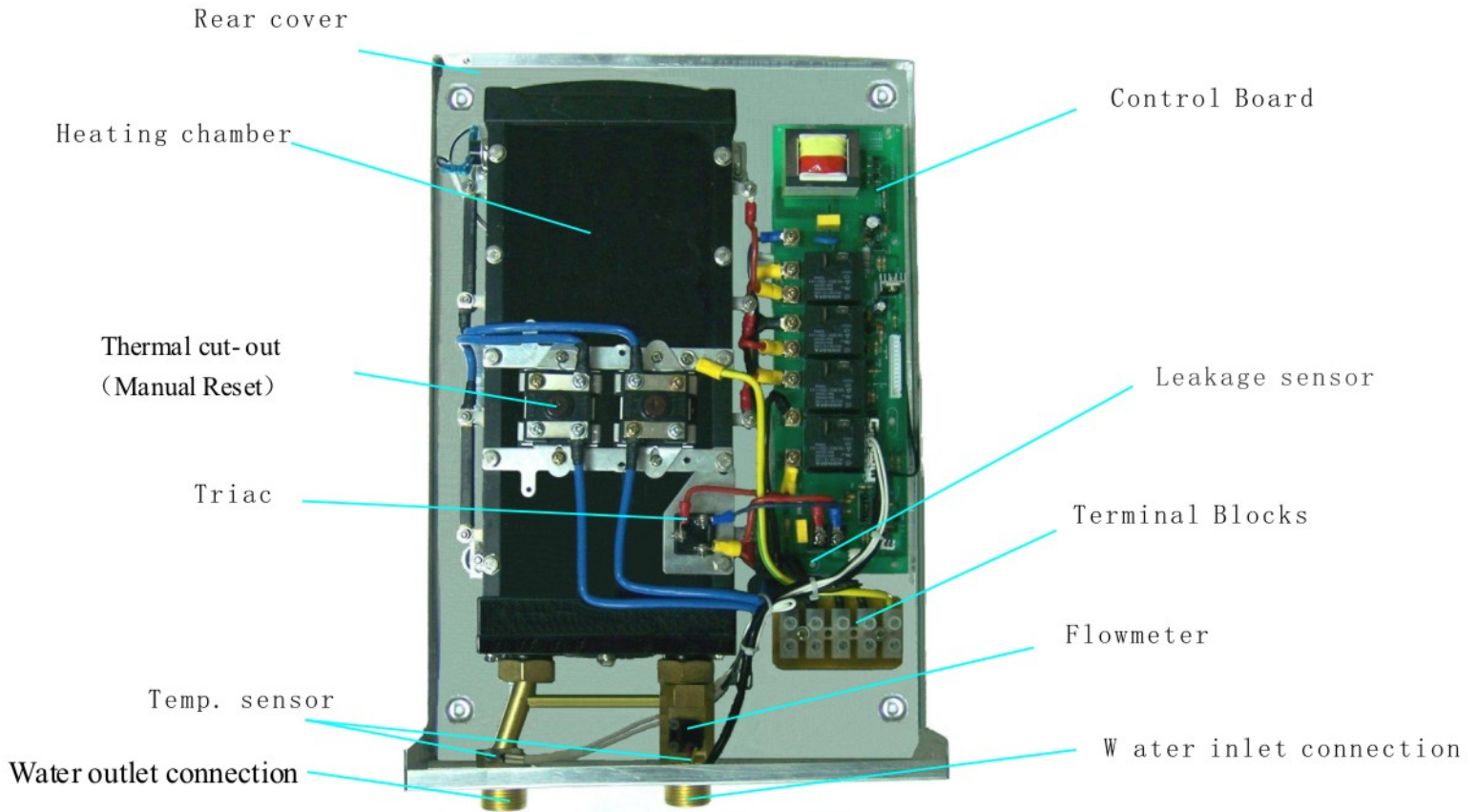
Temperature Rise °F @ 240V versus Flow Rate GPM

Temp Rise °F



Flow Rate
GPM





PATENTED HEATING TECHNOLOGY

PATENT NO.: ZL 2008 2 0081568.0

1. High temperature insulating ceramic layer.
2. Macromolecule heatconducting insulating layer.
3. High temperature heating plate.
4. Macromolecule heatconducting insulating layer.
5. High temperature insulating ceramic layer.

